

LEBOMBO BORDER PROCEDURES for TOURISTS 2022

This info was created by DriveMoz FB group for Group members.



Entering from SA to Moz (Lebombo)

1. Do not queue behind the trucks. Pass them, even sometimes if you have to drive on the wrong side – put hazards, and lights on .. be very careful for oncoming traffic, keep left.
2. As you enter the gates, keep straight, do not follow the trucks to the left unless a traffic officer directs you due to new border procedures. **Stop** when there is a sign to stop.
3. Drive past Police Check point (picture below). They may stop you and check vehicle papers, and other items.



4. Then drive onwards and Park near the emigration buildings. Enter on left side. Proceed to the customs counter inside the building. The staff in the white container also stamps passports, if in use.



5. As you enter the building from the left, 1st is Customs desk.
6. Should you need to declare items of value then ask for Customs Temporary export form, complete it, and get it stamped.

This is only necessary if you have a large amount of valuable equipment / items that you are taking over the border and returning with. Keep the stamped document with you for when you return to proof you did not buy it in Mozambique. Ask the official if you are not sure.



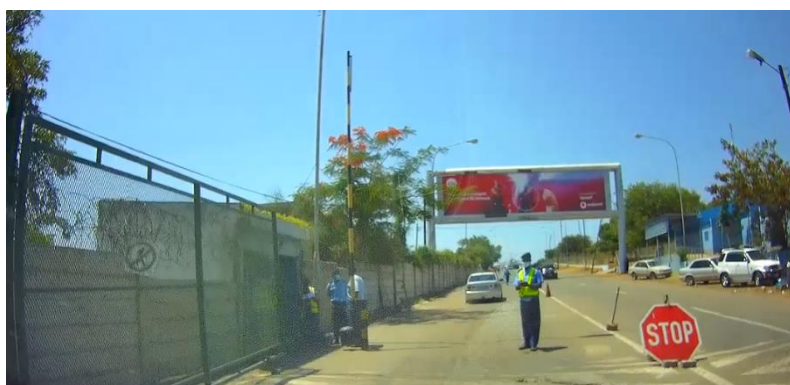
7. Proceed to Emigration Desk and get your Passport stamped. Every person must present himself at the emigration desk. Your children's UBC's or Passports will be checked against the passports of the parents as well as any permission that is required, for a minor to travel with other people. (See Member's Section on www.DriveMoz.co.za)
8. **Make sure all passports are stamped and with the correct date.**
9. After your passport is stamped, return to vehicle, drive towards Mozambique side.

MOZAMBIQUE SIDE –

You need:



- 3rd Party insurance approved by Mozambique – get it from the DriveMoz partners, well before the time – it is not available at the border . Reports of scammers before the border were received. Use the DriveMoz approved partners –
quick into your email – same price click -> <https://bit.ly/Moz-3rd-Party-Hollard>
- You need MZN750 or R200 to R250 in Notes to pay for TIP (Exchange Rate dependant)
- Its handy to have a MOZ Sim and Data connection, as you enter Moz. Get it here before the time.
<https://bit.ly/DriveMozShop>



10. Collect your gate-pass as you enter. They do not always issue gate passes. Sometimes you must complete it yourself with registration number and number of passengers.
11. You will have to pay MZN750 (or R200 to R250 depending on exchange rate – no coins) for a Temporary Import Form.
12. An ABSA Moz ATM is just east of the Immigration Building and sometimes work. (You may pay in Rands Notes)

13. **GATE PASS:** State on Gate pass if you have anything to declare. Allowances are in the DriveMoz Member's Section on the website. Check if number of people are correct

14. Stop near building (C) if you can. Parking on the other far side is also sometimes available. Then Proceed to health officials (A), and show proof of vaccination or Covid tests. They will issue a paper stating you were checked.

15. **RUNNERS / FALSE OFFICIALS / VENDOR PEOPLE / TRICKY PEOPLE MAY OFFER OR DEMAND THAT THEY MUST ASSIST YOU.** They normally wear yellow/green reflective jackets and a name tag – pretending to be officials.

DRIVEMOZ Leaders have done extreme efforts to remove these people – **DO NOT SUPPORT THEM if they are still around.** – stand in the queue and do the border procedure yourself. Biometric scanning of your face will be required in any case at emmigration. **Officials always wear uniforms.**

16. **IF YOU USE ANY OF THE RUNNERS / ASSISTANTS ABOVE, YOU ARE FEEDING THE DRAGON THAT DRIVEMOZ IS FIGHTING. DO Not USE RUNNERS / ASSISTANTS – IT WILL COST YOU DEARLY and don't brag about it on DriveMoz.**

17. **FOREX EXCHANGE**– DO not exchange money at Border – you will be cheated. Some people Exchange at BP or Sasol before the border but those are illegal traders. You can withdraw from the ABSA ATM's next to the Immigration building (B). Remember to notify your bank that they must open your cards for foreign country's use.

18. Enter Building (B) Proceed to Immigration counter – one person can meanwhile queue at the Customs counter for the TIP. (Temporary Import Permit). The person's passport is needed.





19. At Immigration – hand passport and paper received from health scan officials. Each person must present himself. Get all passport stamped and **make sure of stamp and date**. **Read this again. Its a FINE of MZN3000 per passport per day, if you were not correctly stamped into Moz. READ AGAIN**
20. At Customs, (A counter left of Immigration) you will need your gate pass, vehicle & trailer registration papers, passport and the money. (They normally do not give change or will give in MZN notes) Your vehicle info is entered into a computer system. Normally customs will trace if your vehicle is already in the system and when last you were in Moz. A TIP will be given. Check the correctness and sort out immediately if it has errors. Then sign it to accept the conditions.
21. Your vehicle may be searched at the parking area or at the exit gate.
22. **Do not spend valuable time at the border.** Buy your compulsory Mozambique Public Liability 3rd Party Insurance, from DriveMoz. <https://bit.ly/Moz-3rd-Party-Hollard> (It gets emailed to you in a few minutes - check SPAM if not received) . No more 3rd party vendors are at the border, and scammers are in action before the border.
Watch out – there are fraudulent “insurance salesmen”, and you will only know its fraudulent when you are in an accident – then it is too late. Use the approved DriveMoz insurance provider as on our website.
23. You can avoid roaming expenses (nasty surprises). Buy your approved RICAed Sim Card with data for Moz, beforehand, via the www.DriveMoz.co.za website. This ensures communication from the time you enter Moz. – It gets couriered to you, data vouchers are emailed. <https://bit.ly/DriveMozShop>
24. You can have one phone in the car on WiFi hotspot and the rest on Wi-Fi. DO NOT ROAM its is shockingly expensive.
25. Proceed to exit with your vehicle; Customs will collect your Gate Pass and may check your passport, vehicle and TIP.
26. Drive into Mozambique.

Do NOT stop just after or near border, it is a crime / scam area. Stop 5km from border at the Galp Fuel Station. The Sasol garage is also too close to the border and scams have been reported there.

Close windows, hide valuables

27. If you must wait for someone, go approximately 5km from the border to a fuel station and wait there in a safe environment. These scammers will try to **sell you SIM Cards / Road Tax etc.** Ignore them and proceed.
28. Do not use the Sasol Garage on the Moz side near the border.



Remember to LOAD the ZELLO APP and join the DriveMoz Channel. Procedure to join is under Communication under the FILES Section on www.DriveMoz.co.z